

IVCC

Imperial Valve and Cardiovascular Course

Wednesday 22nd – Friday 24th November

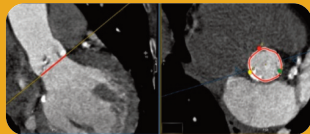
The King's Fund – LONDON, UK

TAVI CT Training

Friday 24th November

CT is rapidly emerging as the gold standard for annular assessment for TAVI. Accurate annular measurements are essential for stent sizing and procedural success.

This workshop will focus on all aspects of CT use in TAVI and provide mentored hands-on training in how to accurately assess the CT aortic annular parameters essential for stent sizing.



The workshop will be suitable for radiographers, radiologists and cardiologists and will cover:

1. Understanding the role of CT in TAVI assessment.
2. Protocols for CT image acquisition and tips on image optimisation.
3. Hands-on TAVI measurements tutorial using CT workstations including:
 - a. Annular sizing: diameter, perimeter and area
 - b. Coronary ostia heights
 - c. Determining cath lab angles for device implantation.
 - d. Ascending aorta assessment
4. Mentored case examples allowing participants to acquire the key skills to perform their own measurements.
5. Understanding high-risk CT features for TAVI that need to be identified by the reporting physician.

FOR FURTHER DETAILS CONTACT

Millbrook Medical Conferences T: 01455 552559

E: events@millbrookconferences.co.uk W: www.ivcc-london.co.uk

*cv142 solution provided by Circle
Cardiovascular Imaging*