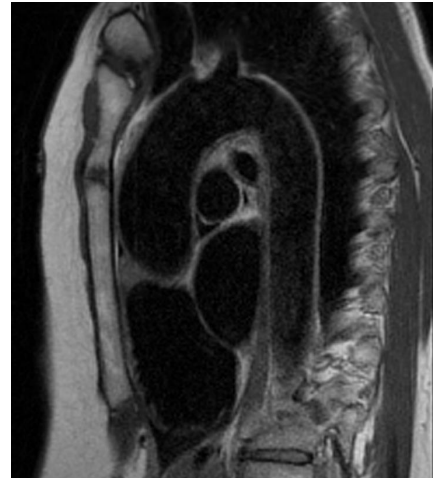
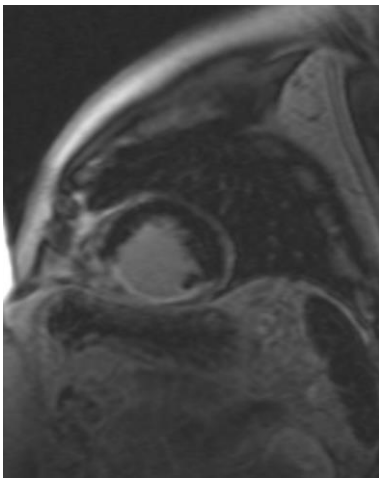
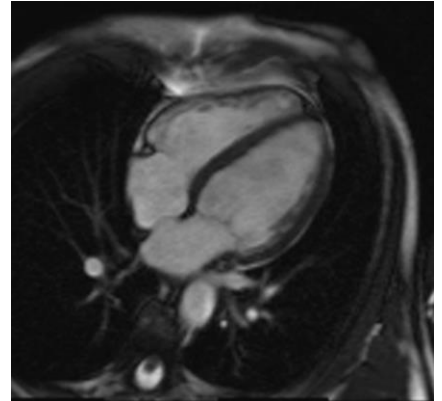


# The Southampton Cardiac MRI Course for Radiographers

An exciting combination of formal lectures, informal group tutorials, interactive live case studies and hands-on scanning.

## Course outline

Cardiac anatomy  
Imaging planes and planning  
Physics  
ECG & Segmentation  
Cardiomyopathy  
Myocardial Viability  
Aortic Imaging  
Congenital Heart Imaging  
CE-MRA  
Interactive live case studies  
Hands-on Scanning  
Imaging patients with pacemakers



Course Fee: £575 to include course dinner and onsite parking

For further information please contact Jane or Mandy  
Tel: 023 8120 4499  
email: [jane.long@uhs.nhs.uk](mailto:jane.long@uhs.nhs.uk); [amanda.murphy@uhs.nhs.uk](mailto:amanda.murphy@uhs.nhs.uk)

## The Southampton Cardiac MRI Course for Radiographers

Southampton General Hospital has a Siemens Avanto 1.5T MRI scanner dedicated to cardiac imaging, and state of the art lecture theatre and conference facilities. A full range of cardiac MR studies are performed including a large cohort of congenital patients and both Adenosine and Dobutamine stress MRI. This provides a wealth of knowledge from a large multidisciplinary team. It is an ideal location to provide a solid grounding for any radiographer wishing to start out in cardiac MRI.

This stimulating course is now in its 12<sup>th</sup> year. It is targeted at radiographers with current MRI experience who are interested in obtaining practical and theoretical knowledge of cardiac MRI and implementing it within their own department.

The course will cover the more commonly requested areas of cardiac MRI such as myocardial viability and aorta imaging at both a theoretical and practical level – the emphasis being on providing the practical skills and knowledge to obtain the correct scan planes, optimise scan sequences, provide maximum spatial and temporal resolution and minimising artefacts. Cardiac MRI physics, ECG gating, and cardiac imaging will be covered in a comprehensive and interactive manner.

The course structure consists of formal lectures, informal tutorial groups, interactive live case studies and hands-on scanning.

It is envisaged that on completion of the 3 day course a radiographer will leave with a clear and comprehensive knowledge of basic cardiac MRI allowing them to confidently scan cardiac patients.

Please note that hands-on scanning experience will be provided on the Siemens Avanto 1.5T MRI scanner

Familiarity with this scanner or Syngo software will be beneficial. Users of alternative Siemens, or other vendor supplied MRI scanners, will gain practical experience of cardiac imaging.

